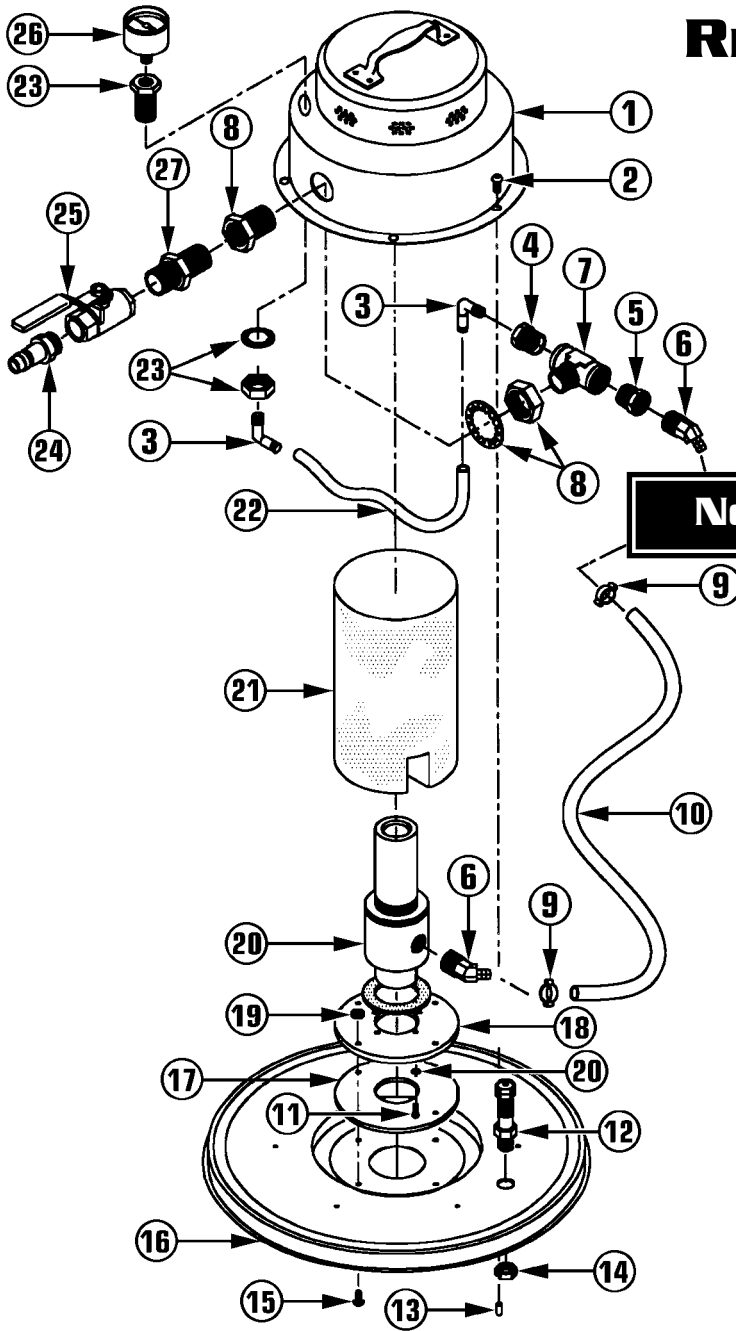


# MAV AIR-OPERATED HEAD REPLACEMENT PARTS LIST (16" & 12" DIA)



**NON-ELECTRIC COMPRESSED AIR**

Ref No	Part Description	Qty	Part No
	16" Air-Operated Head Assy	1	304913
	12" Air-Operated Head Assy	1	368563
1	Dome Assembly	1	304077
2	#12-14 X 1/2" Screw (16" Head)	6	314595
3	1/8" NPT Elbow Fitting	2	304395
4	1/2" to 1/8" Reducer	1	304298
5	1/2" to 3/8" Reducer	1	359947
6	45 Deg Barber Connector	2	304679
7	1/2" Tee Fitting (16" Head)	1	304379
8	1/2" NPT Bulk Head	1	304115
9	5/8" Hose Clamp (16" Head)	2	304948
10	3/8" High Pressure Hose	1	304964
11	#10-24 X 1/2" Screw	4	341622
12	Air Relief Valve (16" Head)	1	304883
13	Screw Protector (16" Head)	6	341649
14	Pal Nut	1	307971
15	#10-24 X 5/8" Screw (12" Head)	4	351210
16A	16" Cover Assembly	1	304859
16B	12" Cover Assembly	1	302929
17	Circle Gasket	1	394319
18	Mounting Plate	1	304700
19	#10-24 Hex Nut w/Lockwasher	4	331201
20	Venturi	2	304506
21	Muffler	1	306096
22	1/4" OD Tubing	1	304492
23	1/8" NPT Bulk Head	1	304093
24	Quick Coupler	1	304484
25	Ball Valve	1	304468
26	0-200 Pressure Gauge	1	304131
27	1/2" Brass Close Nipple Fitting	1	350478
28	Gasket	1	416460
29	#10 Lockwasher	4	380725